

DIVERSIFIED AIR SYSTEMS, INC.

**MAXBOOM™**

*Pivoting Extension Boom*



- *Single or double pivot*
- *Adjustable pressure friction disks*
- *Ball bearing movement*
- *Increases reach of equipment by up to 20' [6,2 m]*
- *May be equipped with MAXFLO fume arm, MAXREEL exhaust hose reel or MAXDROP hose drop system*
- *Top or bottom exhaust outlets*
- *Two diameters available*

*Superior technology generating substantial operating savings*

## MAXBOOM *Extension pivot boom*

MAXBOOM pivoting extension booms are designed to increase the area of reach for source capture products such as the MAXFLO self supporting fume arms and vehicle exhaust equipment such as hose reels and hose drops. The extension booms aid in reaching points which are distant from a wall or other mounting areas. Extension booms can also be use to support items such as welding wire feeders or to undersling hoses or cables in conjunction with their primary function. The swivel section of the extension booms is made of rolled steel pipe. The top and bottom of the pipe is adapted to accept a fan or flanged duct connection. The extension beams are manufactured of heavy gauge steel tubing with a bearing swivel. The spiral ducting mounted along the beam has a diameter of 6" [150 mm] or 8" [200 mm]. Standard units are supplied with brackets for mounting fume arms or hose drops. Double pivot type extension booms are divided by a bearing hinge which allows the user to reach back under the extension boom.

## *Industrial Air Specialists*

With our headquarters in Louisville, Kentucky, Diversified Air Systems, Inc. has been providing quality air solutions to industrial and commercial facilities since 1981. During our more than twenty-nine years of operation, Diversified Air Systems, Inc. has established two important company traditions: offering state-of-the-art equipment at competitive prices and achieving long-term customer satisfaction.

The staff of Diversified Air Systems, Inc. includes five application engineers, with a combined experience of more than 75 years in the air filtration and HVAC industry. Whether your facility requires an air filtration system for dust, mist, or fumes, or an HVAC solution to meet ventilation needs, Diversified Air Systems, Inc. has the equipment and expertise to meet the need.

Services include air quality analysis, system design, equipment sales, turnkey installation, onsite servicing, and supply of replacement filters and accessories.

### **Other Filtration Systems available:**

Air Cleaners

Containment Booths

Decontamination Booths

Downdraft Tables

Dust Collectors

Fans and Blowers

Gas & Odor Control

High Vacuum Systems

Mist Collectors

Paint Booths

Stainless Steel Collectors

Vehicle Exhaust Systems

Wet Dust Collectors



## MAXBOOM WHEN EXTENDED REACH IS A MUST

A great complement to MAXFLO fume arms, MAXREEL exhaust hose reels or MAXDROP hose drops

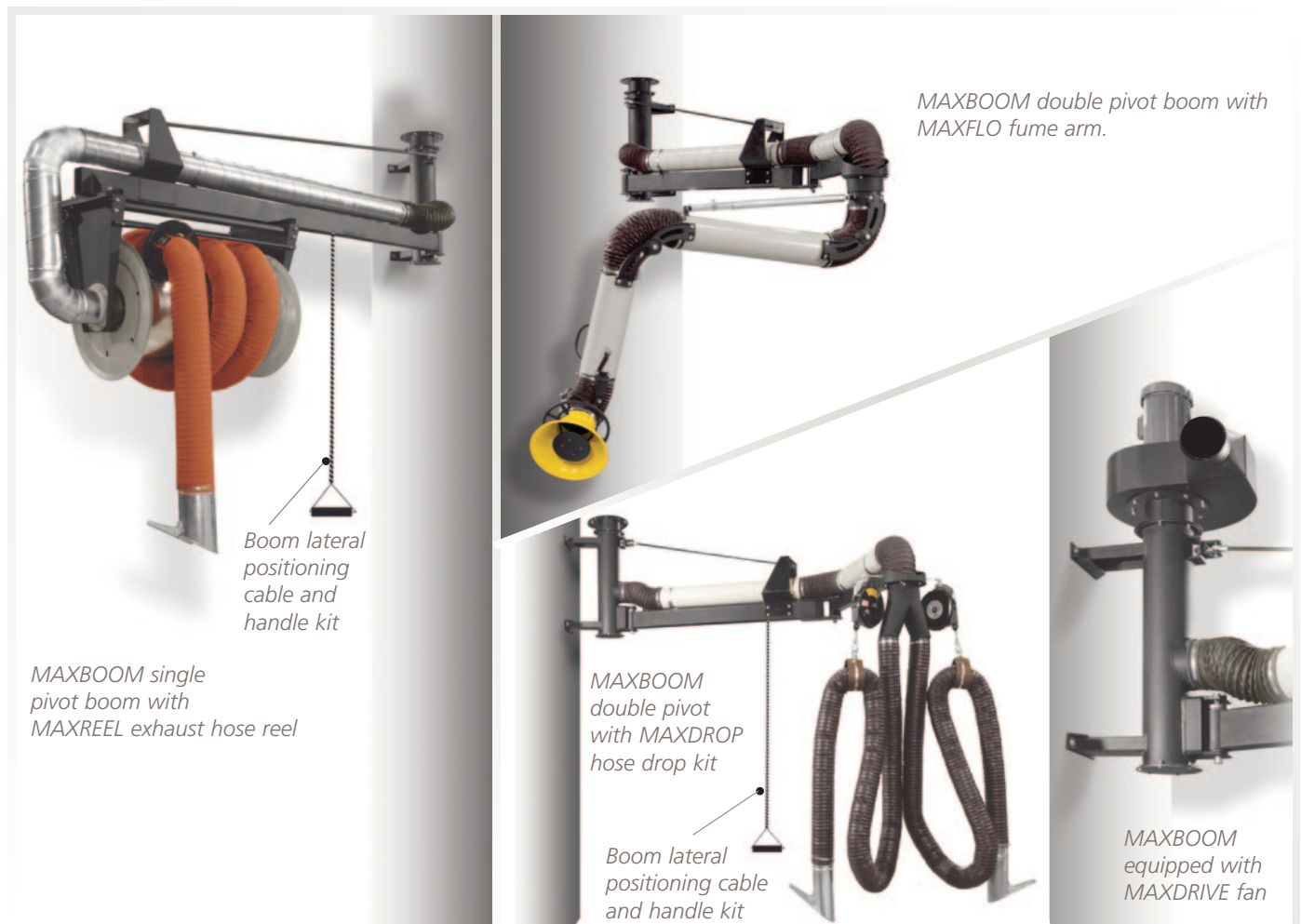
Most of our competitors do not include these standard features:

- Completely self-supported
- Ball bearing movement for ease of usage (2nd pivot)
- Choice of two diameters: 6" [150 mm] or 8" [200 mm] and lengths up to 20' [6,2 m].
- Single or double pivot for multiple application
- Smooth tube design equals lower static pressure
- Robust and heavy gauge steel construction (powder painted)

## MULTIPLE POSSIBILITIES FOR VARIOUS APPLICATIONS

- Large welding shops • Truck maintenance • Dust and smoke exhaust

## TYPICAL APPLICATIONS FOR THE MAXBOOM EXTENSION BOOMS





**OUTSTANDING MAXBOOM FEATURES**

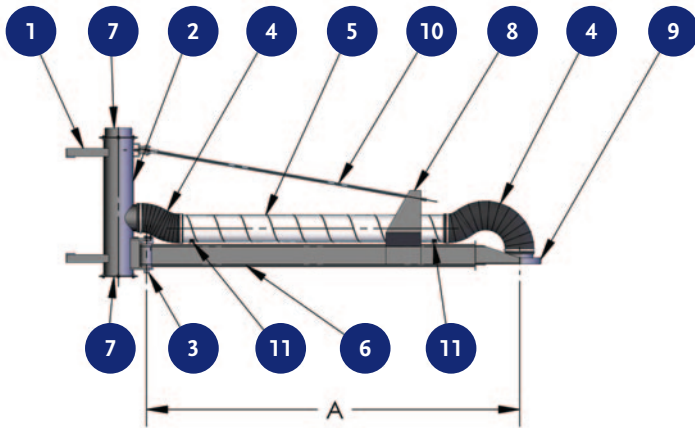


**GENERAL DESCRIPTION**

MAXBOOM extension swing booms are made of steel with a single or double ball bearing movement pivot joint(s). Friction disks at the joints ensure that no steel parts rub against each other causing premature wear. The spiral ducting in 6" [160 mm] or 8" [200 mm] mounted on saddles minimizes static pressure and air friction. Different lengths up to 20' [6,2 m] are available (page 7). The support rod attached between the boom base and rod bracket ensures leveling of MAXBOOM boom. Flexible hoses (250° F or 120° C) at joints are clamped to spiral ducting. Higher temperature tolerance flexible hoses are available. End of boom is equipped with a support bracket for the MAXFLO fume arm or MAXDROP hose drop systems for vehicle fume exhaust. A custom support bracket can be installed at the end of the single pivot boom for MAXREEL exhaust hose reel for vehicle fume exhaust.

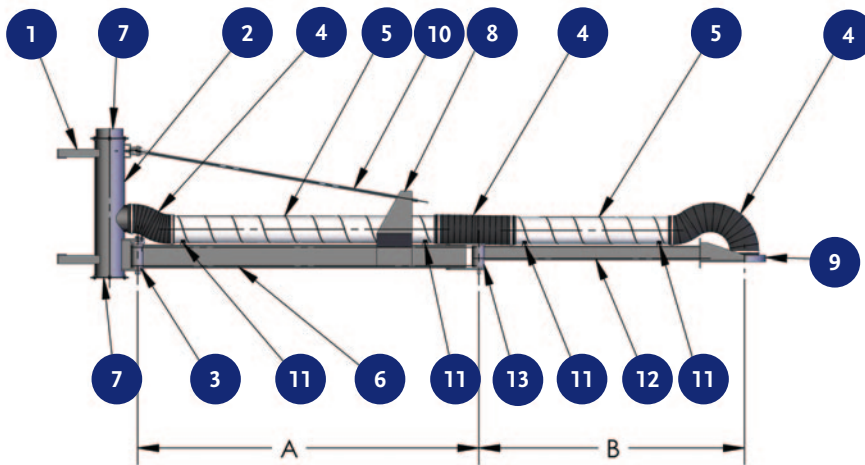
*Note :* Installation must be made according to local building codes and regulations

## MAXBOOM MAIN COMPONENTS



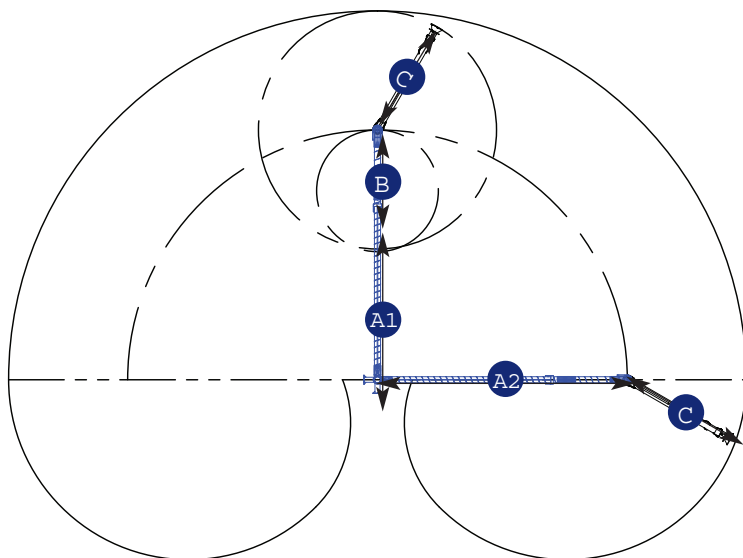
MAXBOOM components —  
single pivot model

1. Boom base and support bracket
2. Main exhaust pipe (top or bottom exhaust)
3. Bushing pivot joint
4. Flexible hose with clamps
5. Spiral exhaust duct
6. Primary support steel beam
7. Companion flange for exhaust (end cap included)
8. Rod bracket
9. Arm or hose drop bracket
10. Support rod
11. Duct saddles



MAXBOOM components —  
double pivot model

1. Boom base and support bracket
2. Main exhaust pipe (top or bottom exhaust)
3. Bushing Pivot joint
4. Flexible hose with clamps
5. Spiral exhaust duct
6. Primary support steel beam
7. Companion flange for exhaust (end cap included)
8. Rod bracket
9. Arm or hose drop bracket
10. Support rod
11. Duct saddles
12. Secondary support beam
13. Ball bearing pivot joint



Maximum reaches —  
double pivot  
with MAXFLO fume arm

- A1. 15' [4.60 M]
- B. 5' [1.55 M]
- C. 11.2' [3.40 M]

Maximum reaches —  
single pivot  
with MAXFLO fume arm

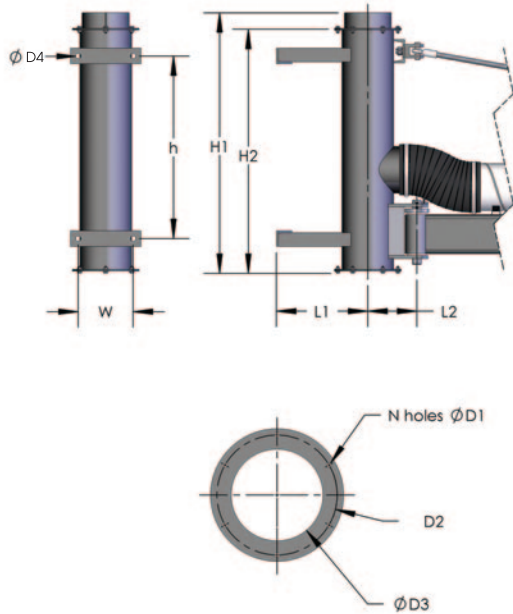
- A2. 20' [6.15 M]
- C. 11.2' [3.40 M]

**MAXBOOM installation note :** installation height of horizontal beam and equipment at end of such beam should be coordinated with the facility manager for safety of the employees. Lateral movement of the MAXBOOM extension swing boom should not encumber other equipment or be a potential risk of injury to employees. Refer to appropriate leaflet for optional equipment selected with MAXBOOM boom.

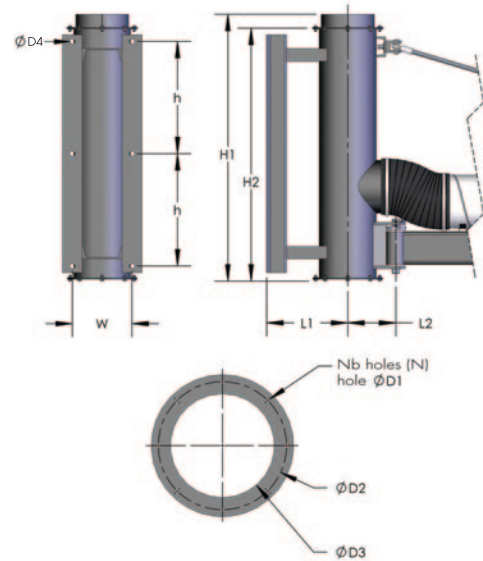
**Shipping note:** because of freight restrictions, longer than 10' (3 m) MAXBOOM extension booms are shipped in two (2) sections. Main tube will need field assembly with joiner included.

## MAXBOOM BOOM BASE DIMENSIONS

### BOOM BASE 6" [150 MM]



### BOOM BASE 8" [200 MM]

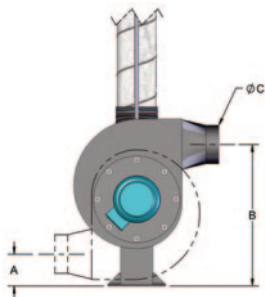


### Base dimensions

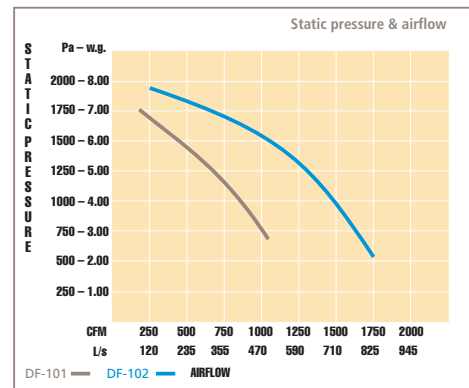
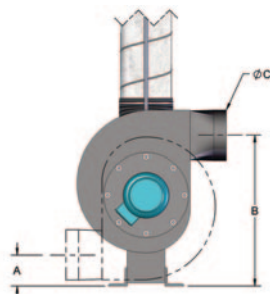
CHART 1

Base size [inches]	Dimensions [inches] / [mm]										
	W	h	L1	L2	H1	H2	N	D1	D2	D3	D4
6	7 / 178	23.4 / 594	11.69 / 297	6.26 / 159	33.39 / 848	31.29 / 795	6	0.31 / 8	7.69 / 195	5.88 / 150	0.625 / 16
8	9 / 225	17 / 425	12.2 / 305	11 / 279	38.10 / 752	41.10 / 1027	8	0.34 / 9	9.69 / 246	7.88 / 200	0.625 / 16

### BOOM BASE 6" [150 MM] WITH 1HP MAXDRIVE FAN (TOP VIEW)



### BOOM BASE 8" [200 MM] WITH 2HP MAXDRIVE FAN (TOP VIEW)



Fan data	
Available voltages	115/230-1-60 208/460-3-60 575-3-60
Blade type	Backward inclined (aluminum)
Housing	steel (painted)
Motor	TEFC
R.P.M.	3450

Note: refer to MAXDRIVE leaflet for fan capacity and technical data.

## MODEL NUMBERS

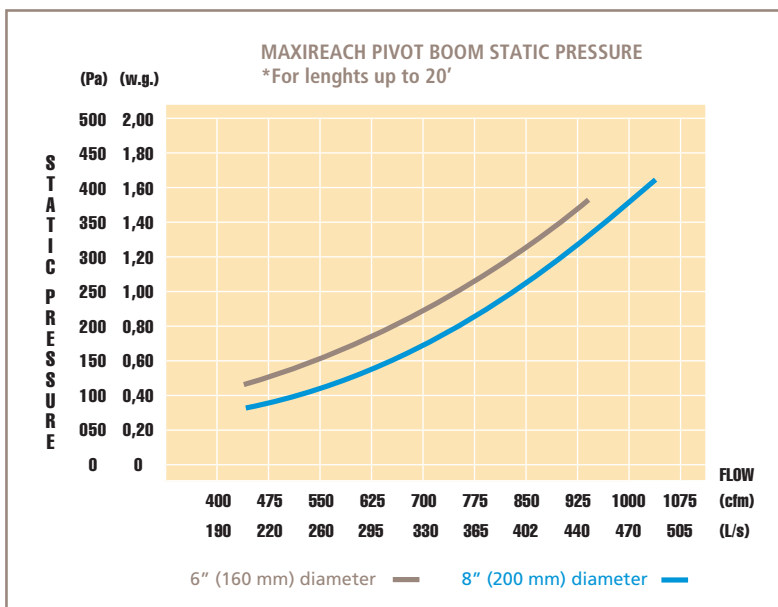
### MAXBOOM MODEL NUMBERS

CHART 2

Model numbers	Reach of work [feet] / [m]			Ducting diameter [inches] / [mm]	Minimum mounting height [feet] / [m]	Boom load capacity [lb] / [kg]	Number of pivots	Weight [lbs] / [kg] whitout fan
	A	B	Total					
EBS-605	5 / 1.55	—	5 / 1.55	6 / 152	7.8 / 2.4	150 / 70	1	124 / 58
EBS-610	10 / 3.10	—	10 / 3.10	6 / 152	7.8 / 2.4	150 / 70	1	144 / 67
EBS-615	15 / 4.60	—	15 / 4.60	6 / 152	7.8 / 2.4	150 / 70	1	168 / 77
EBS-620	20 / 6.15	—	20 / 6.15	6 / 152	7.8 / 2.4	150 / 70	1	200 / 91
EBD-60302	3 / 0.92	2 / 0.60	5 / 1.55	6 / 152	7.8 / 2.4	75 / 34	2	170 / 77
EBD-60703	7 / 2.15	3 / 0.92	10 / 3.10	6 / 152	7.8 / 2.4	75 / 34	2	177 / 82
EBD-61005	10 / 3.10	5 / 1.55	15 / 4.60	6 / 152	7.8 / 2.4	75 / 34	2	185 / 84
EBD-61505	15 / 4.60	5 / 1.55	20 / 6.15	6 / 152	7.8 / 2.4	75 / 34	2	200 / 91
EBS-805	5 / 1.55	—	5 / 1.55	8 / 200	7.8 / 2.4	150 / 70	1	195 / 88
EBS-810	10 / 3.10	—	10 / 3.10	8 / 200	7.8 / 2.4	150 / 70	1	214 / 97
EBS-815	15 / 4.60	—	15 / 4.60	8 / 200	7.8 / 2.4	150 / 70	1	235 / 107
EBS-820	20 / 6.15	—	20 / 6.15	8 / 200	7.8 / 2.4	150 / 70	1	254 / 115
EBD-80302	3 / 0.92	2 / 0.60	5 / 1.55	8 / 200	7.8 / 2.4	75 / 34	2	230 / 104
EBD-80703	7 / 2.15	3 / 0.92	10 / 3.10	8 / 200	7.8 / 2.4	75 / 34	2	255 / 116
EBD-81005	10 / 3.10	5 / 1.55	15 / 4.60	8 / 200	7.8 / 2.4	75 / 34	2	272 / 124
EBD-81505	15 / 4.60	5 / 1.55	20 / 6.15	8 / 200	7.8 / 2.4	75 / 34	2	298 / 135

MAXREEL OPTIONAL EQUIPMENT NOTE AND MODEL NUMBER: add suffix letter H to MAXBOOM model number for extension booms equipped with hose reel. Ex: EBSH-815 instead of EBS-815. Refer to MAXREEL leaflet for details.

## STATIC PRESSURE & AIR FLOW



Superior technology  
generating  
substantial  
operating savings

Note : double pivot booms static pressure will increase as the second pivot rotates left or right. Full rotation on second pivot will increase static pressure by 35-40%. Static pressure shown in chart does not include source capture equipment. Refer to appropriate leaflet for selection.

## OPTIONS

- MAXFLO fume arms
- MAXDROP exhaust hose drops
- MAXREEL exhaust hose reels
- MAXDRIVE exhaust fan
- High or extreme temperature hoses at joints
- Non-standard lengths and diameters
- Booms connected to dust collectors
- Stainless steel construction

## CREATE YOUR MAXBOOM EXTENSION SWING BOOM SPECIFICATION

### 1. EXTENSION SWING BOOM SHOULD INCLUDE:

Painted tubular steel tubing, spiral ducting, adjustable pressure friction disks at joints, 275 °F hoses at boom base and pivot joints and support bracket for MAXFLO fume arm or MAXDROP hose drop system, pull rod on 1st pivot for levelling and support, adjustable pressure friction disks at boom base pivot ball bearing movement on second pivot.

### 2. EXTENSION SWING BOOM SHOULD HAVE DIAMETER OF :

- A) 6" [160 mm]
- B) 8" [200 mm]

### 3. EXTENSION SWING BOOM SHOULD HAVE TOTAL LENGTH OF :

- A) 5' [1,55 m]
- B) 10' [3,10 m]
- C) 15' [4,60 m]
- D) 20' [6,15 m]

### 4. EXTENSION SWING BOOM SHOULD CONSIST OF :

- A) single pivot with adjustable pressure friction disks and support base
- B) double pivot with 2/3'rd of total length on first pivot and 1/3'rd remaining on second pivot portion

### 5. EXTENSION SWING BOOM SHOULD INCLUDE:

- A) top ducting connection
- B) bottom ducting connection
- C) MAXDRIVE 1H.P. for 6" boom
- D) MAXDRIVE 2H.P. for 8" boom

### 6. EXTENSION SWING BOOM SHOULD INCLUDE :

- support bracket for MAXREEL exhaust hose reel (single pivot only)

### 7. EXTENSION SWING BOOM SHOULD INCLUDE OPTIONAL :

- A) 500 °F [260 °C] flexible hoses at pivot joint(s)
- B) 900 °F [480 °C] flexible hoses at pivot joint(s)
- C) telescopic aluminium grab pole for lowering nozzle from MAXREEL or MAXDROP exhaust system
- D) lateral positioning cable and handle kit for booms equipped with MAXREEL or MAXDROP exhaust system

### Diversified Air Systems, Inc.

10801 Electron Drive, Louisville, Kentucky 40299

Toll free: **(800) 264-8958**

Tel.: **(502) 267-0333** • Fax: **(502) 267-4241**

Website: [www.diversair.com](http://www.diversair.com) • email: [info@diversair.com](mailto:info@diversair.com)

Continuous product improvement is a policy of D.A.S. Inc. Product features and specifications may be modified without prior notice.